

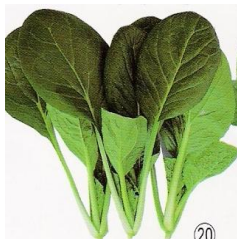
SPINACH

Spinacia oleracea



Bloomsdale

Bloomsdale Long Standing - Large glossy thick dark green leaves, erect compact plant, heavy yielding, fine quality, popular old home garden variety also used in market gardens, withstands heat or cold, tolerates wide range of soils if kept fertile and moist. Sow all year except in extreme conditions.



Monsan

Japanese Monsan - All year round growing Japanese greens with bright dark green leaves. Upright posture makes harvesting easy.



Torasan

Japanese Torasan (Komatsuna) - Cold tolerant, shiny blackish-green leaved Japanese greens. Slow bolting, suitable for growing from fall to spring.